



The Fort Ord Rec Trail and Greenway (FORTAG)

www.fortag.org

Presentation to
Native Advisory Council

Fred Watson & Scott Waltz

2 Oct 2018

What is FORTAG?

“The Fort Ord Rec Trail and Greenway (FORTAG) is proposed as a 30-mile regional network of paved recreational trails and greenways connecting communities to open space.”

FORTAG Values

- Connect people to open space
- Be a pleasant experience
- Be useable by anyone
- Have room for everyone
- Be complementary to the built environment
- Have loops, of different sizes
- Be 100% connected all the way around each loop
- Have no 'red flags' from land owners and/or jurisdictions
- Function as a habitat corridor for dispersal of native plants and movement of wildlife (with the exception of certain constrained segments where this is impractical)

Fort Ord Rec Trail and Greenway



Relationship to population density

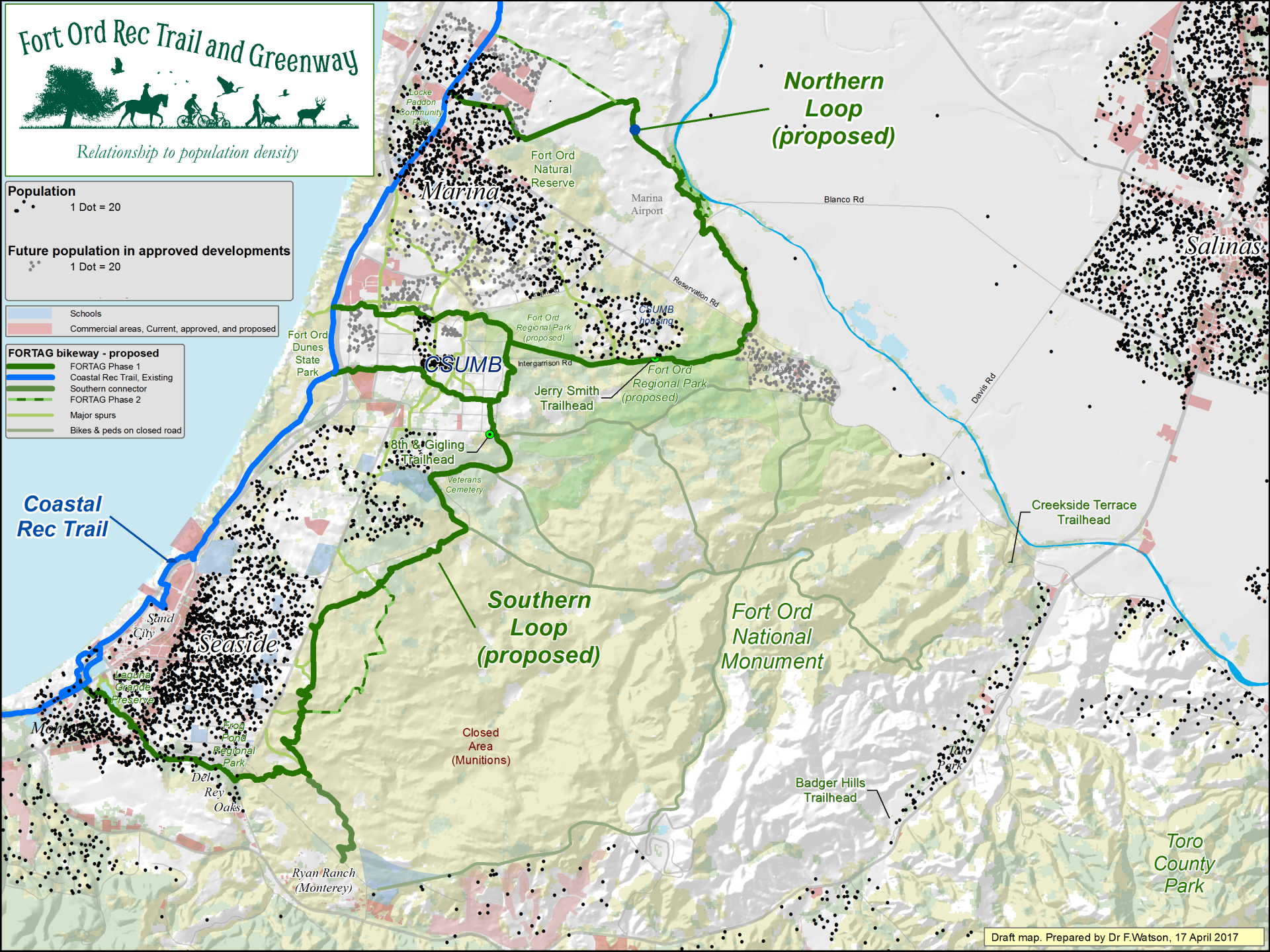
Population
 1 Dot = 20

Future population in approved developments
 1 Dot = 20

Schools
 Commercial areas, Current, approved, and proposed

FORTAG bikeway - proposed

- FORTAG Phase 1
- Coastal Rec Trail, Existing
- Southern connector
- FORTAG Phase 2
- Major spurs
- Bikes & peds on closed road













Native People—Partners with the Land



Imagine standing here, in this very place, more than 200 years ago. The native people living here at that time were now called Ohlone. It was they who had tended the land for several thousand years, hunting and gathering plants for food, medicines, baskets, housing, and other needs.

Today, the descendants of these original people still gather plants for traditional practices, including Ohlone basketry. Once a lost art, Ohlone basketry has now been revived and is practiced by a small but growing group of weavers. It is they you may see digging the soil beneath these ancient gnarled oaks, harvesting the slender rhizomes of the sedge plant (*Carex barbouri*) that are so important if Ohlone basketry is to continue.

In the past, baskets were a necessary part of everyday life. Today, weaving baskets is a way of bringing honor and respect to the region's first people and a way of keeping Ohlone culture alive.



When most people think of a Native American basket, they think of the traditional, shallow, oval-shaped basket. But the most skilled weavers, for Ohlone basketry, the traditional basket, or basket, is not the only one. There are many other types of baskets, some of which are used for food, some for housing, and some for other purposes. The baskets are made from a variety of materials, including reeds, grasses, and animal skins. The baskets are woven in a variety of patterns, including geometric, floral, and abstract. The baskets are used in a variety of ways, including for food, housing, and other purposes. The baskets are an important part of Ohlone culture and are still used today.

Ohlone basketry is a traditional art form that has been practiced for thousands of years. The baskets are made from a variety of materials, including reeds, grasses, and animal skins. The baskets are woven in a variety of patterns, including geometric, floral, and abstract. The baskets are used in a variety of ways, including for food, housing, and other purposes. The baskets are an important part of Ohlone culture and are still used today.

Ohlone basketry is a traditional art form that has been practiced for thousands of years. The baskets are made from a variety of materials, including reeds, grasses, and animal skins. The baskets are woven in a variety of patterns, including geometric, floral, and abstract. The baskets are used in a variety of ways, including for food, housing, and other purposes. The baskets are an important part of Ohlone culture and are still used today.

Ohlone basketry is a traditional art form that has been practiced for thousands of years. The baskets are made from a variety of materials, including reeds, grasses, and animal skins. The baskets are woven in a variety of patterns, including geometric, floral, and abstract. The baskets are used in a variety of ways, including for food, housing, and other purposes. The baskets are an important part of Ohlone culture and are still used today.

Ohlone basketry is a traditional art form that has been practiced for thousands of years. The baskets are made from a variety of materials, including reeds, grasses, and animal skins. The baskets are woven in a variety of patterns, including geometric, floral, and abstract. The baskets are used in a variety of ways, including for food, housing, and other purposes. The baskets are an important part of Ohlone culture and are still used today.

Ohlone basketry is a traditional art form that has been practiced for thousands of years. The baskets are made from a variety of materials, including reeds, grasses, and animal skins. The baskets are woven in a variety of patterns, including geometric, floral, and abstract. The baskets are used in a variety of ways, including for food, housing, and other purposes. The baskets are an important part of Ohlone culture and are still used today.

Ohlone basketry is a traditional art form that has been practiced for thousands of years. The baskets are made from a variety of materials, including reeds, grasses, and animal skins. The baskets are woven in a variety of patterns, including geometric, floral, and abstract. The baskets are used in a variety of ways, including for food, housing, and other purposes. The baskets are an important part of Ohlone culture and are still used today.

Ohlone basketry is a traditional art form that has been practiced for thousands of years. The baskets are made from a variety of materials, including reeds, grasses, and animal skins. The baskets are woven in a variety of patterns, including geometric, floral, and abstract. The baskets are used in a variety of ways, including for food, housing, and other purposes. The baskets are an important part of Ohlone culture and are still used today.

Ohlone basketry is a traditional art form that has been practiced for thousands of years. The baskets are made from a variety of materials, including reeds, grasses, and animal skins. The baskets are woven in a variety of patterns, including geometric, floral, and abstract. The baskets are used in a variety of ways, including for food, housing, and other purposes. The baskets are an important part of Ohlone culture and are still used today.

Ohlone basketry is a traditional art form that has been practiced for thousands of years. The baskets are made from a variety of materials, including reeds, grasses, and animal skins. The baskets are woven in a variety of patterns, including geometric, floral, and abstract. The baskets are used in a variety of ways, including for food, housing, and other purposes. The baskets are an important part of Ohlone culture and are still used today.

Ohlone basketry is a traditional art form that has been practiced for thousands of years. The baskets are made from a variety of materials, including reeds, grasses, and animal skins. The baskets are woven in a variety of patterns, including geometric, floral, and abstract. The baskets are used in a variety of ways, including for food, housing, and other purposes. The baskets are an important part of Ohlone culture and are still used today.



FORT ORD REUSE PLAN



SOURCE: Jones & Stokes, 1995; Relmer Associates, (Re-projected), 1995; Monterey Co., 1995; EDAW/EMC, 1996.



LEGEND:

High Sensitivity

BLM: Bureau of Land Management

Riparian/
Estuarine Corridor

Higher Sensitivity - All terraces and benches adjacent to the Salinas River and El Toro Creek, the peripheries of the wet cycle lakes, and lands adjacent to the streams.

FIGURE 4.4-2

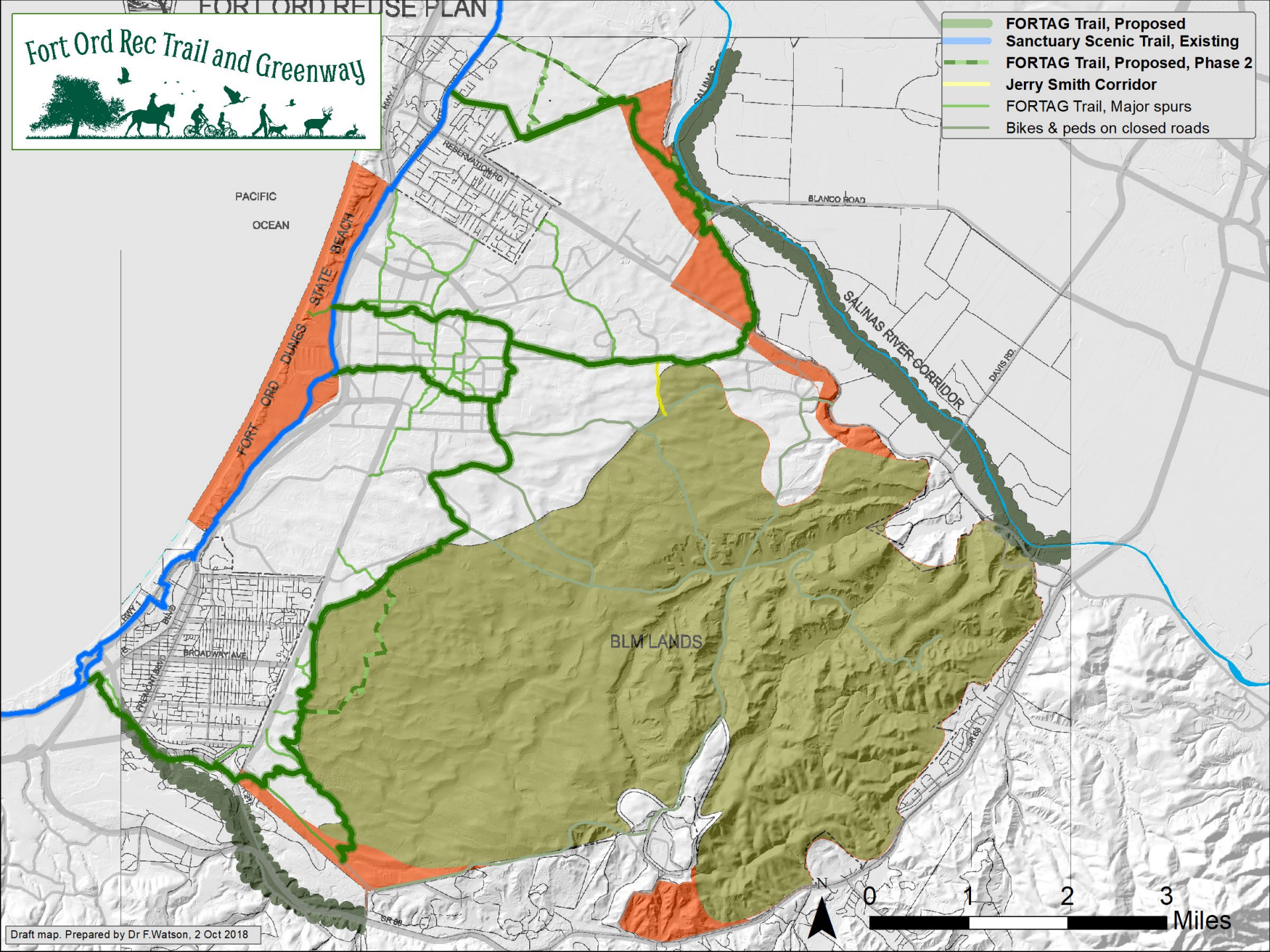
ARCHAEOLOGICAL RESOURCE SENSITIVITY

Fort Ord Rec Trail and Greenway



FORT ORD REUSE PLAN

- FORTAG Trail, Proposed
- Sanctuary Scenic Trail, Existing
- FORTAG Trail, Proposed, Phase 2
- Jerry Smith Corridor
- FORTAG Trail, Major spurs
- Bikes & peds on closed roads



Next steps

- Continuous communication with stakeholders
- Preliminary Engineering Design & Environmental review
- Incorporation into jurisdictional General Plans and related documents
 - FORA – Habitat Conservation Plan – FORTAG included in draft
 - County of Monterey – FORHA plan - FORTAG included in draft
 - FORA – “Drafts Trail Concept” – Approved; mirrors FORTAG
 - MPRPD 5-yr Strategic Plan – Collaboration with FORTAG included
 - CSUMB – GP update – FORTAG included in draft
 - TAMC Transportation Safety and Investment Plan – FORTAG included, and funded for \$20M + \$1M from State
 - City of Seaside – GP update – FORTAG included in draft
 - City of Marina:
 - General support - Council adopted motion in support of FORTAG
 - CIP – Includes \$50K master planning for FORTAG
 - GP amendments – Discussed
 - City of Del Rey Oaks – Presentation to council received well. Several meetings, tours with staff & elected.
 - City of Monterey – Positive discussions with staff & electeds
 - AMBAG – Metropolitan Transportation Plan 2040 – Included in draft
- Easements

Fort Ord Rec Trail and Greenway



fortag.org

facebook.com/FORTAG



Final note:

If you happen to be shown in one of the photos in this presentation and either:

(1) want a copy of the photo, or

(2) want the photo to be removed from our outreach materials,
please let us know.

fortag@fortag.org



Northern Loop

FORTAG bikeway - proposed

Coastal Rec Trail, Existing

FORTAG Phase 1

FORTAG Phase 2

FORTAG major spur

TH

Trailhead

L

Local access

Span

135

180

360

General bikeways & trails

Proposed, Paved, Class 0

Proposed, Paved, Class 0, Phase 2

Proposed, Paved, Class 1

Proposed, Paved, Class 2

Proposed, Paved, Class 3

Proposed alternate, Paved, Class 0

Proposed alternate, Paved, Class 0, Phase 2

Proposed alternate, Paved, Class 1, Phase 2

Proposed spur, Paved, Class 0

Proposed spur, Paved, Class 1

Proposed spur, Paved, Class 2

Proposed spur, Paved, Class 3

Existing alternate, Paved, Class 0

Existing, Paved, Class 0

Existing, Paved, Class 1

Existing, Paved, Class 2

Existing, Paved, Class 3

Existing, Unpaved road

Existing, Unpaved

Existing spur, Paved, Class 0

Existing spur, Paved, Class 1

Existing spur, Paved, Class 2

Existing spur, Paved, Class 3

Existing sidewalk, Paved

Existing spur, Unpaved

Existing spur, Unpaved, Class 1

Proposed spur, Unpaved

Proposed spur, Unpaved, Class 1

Boundary of former Fort Ord

Roads

4 lanes

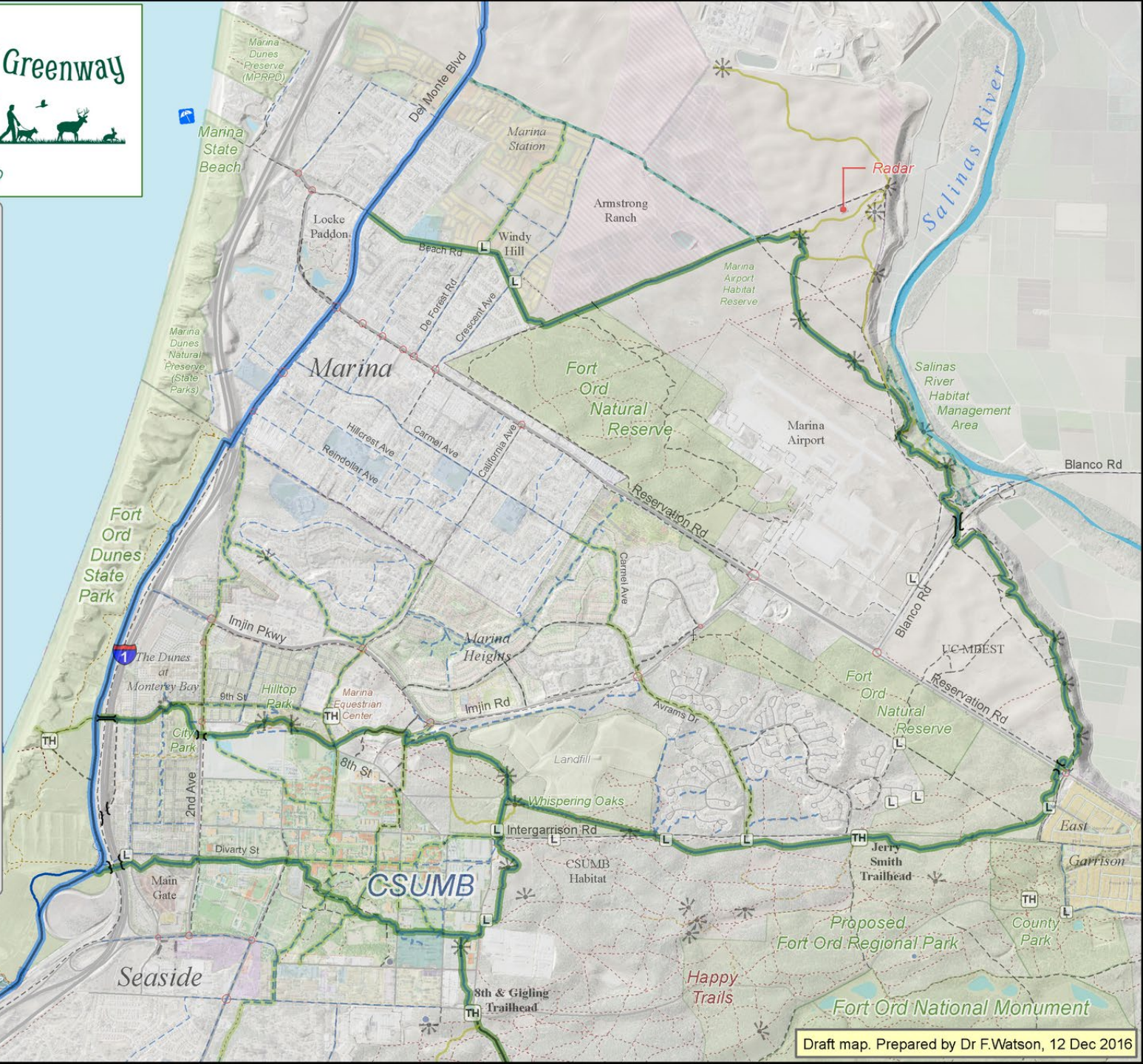
4/2 lanes

2 lanes

2 lanes - proposed

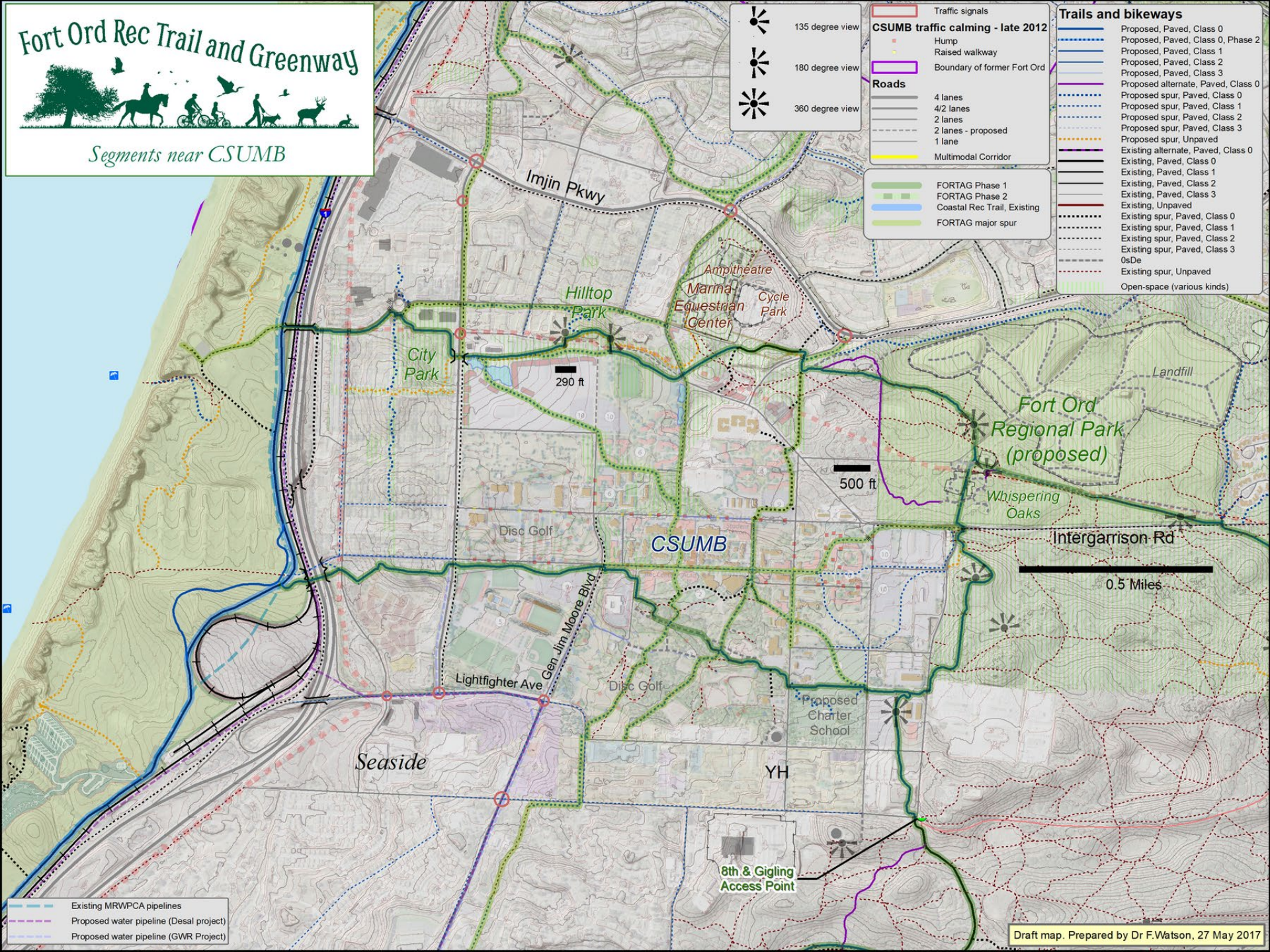
1

-1



Fort Ord Rec Trail and Greenway

Segments near CSUMB



Traffic signals

- 135 degree view
- 180 degree view
- 360 degree view

CSUMB traffic calming - late 2012

- Hump
- Raised walkway
- Boundary of former Fort Ord

Roads

- 4 lanes
- 4/2 lanes
- 2 lanes
- 2 lanes - proposed
- 1 lane
- Multimodal Corridor

- FORTAG Phase 1
- FORTAG Phase 2
- Coastal Rec Trail, Existing
- FORTAG major spur

Trails and bikeways

- Proposed, Paved, Class 0
- Proposed, Paved, Class 0, Phase 2
- Proposed, Paved, Class 1
- Proposed, Paved, Class 2
- Proposed, Paved, Class 3
- Proposed alternate, Paved, Class 0
- Proposed spur, Paved, Class 0
- Proposed spur, Paved, Class 1
- Proposed spur, Paved, Class 2
- Proposed spur, Paved, Class 3
- Proposed spur, Unpaved
- Existing alternate, Paved, Class 0
- Existing, Paved, Class 0
- Existing, Paved, Class 1
- Existing, Paved, Class 2
- Existing, Paved, Class 3
- Existing, Unpaved
- Existing spur, Paved, Class 0
- Existing spur, Paved, Class 1
- Existing spur, Paved, Class 2
- Existing spur, Paved, Class 3
- OsDe
- Existing spur, Unpaved
- Open-space (various kinds)

- Existing MRWPCA pipelines
- Proposed water pipeline (Desal project)
- Proposed water pipeline (GWR Project)

Fort Ord Rec Trail and Greenway

Southern Loop

FORTAG bikeway - proposed	
	FORTAG Phase 1
	FORTAG Phase 2
	Southern connector
	Coastal Rec Trail, Existing
	FORTAG Phase 1, Alternate
	FORTAG major spur
Roads	
	4 lanes
	4/2 lanes
	2 lanes
	1 lane
	2 lanes - proposed
	1 lane - proposed
	Proposed water pipeline (Desal project)
	Existing MRWPCA pipelines
	Proposed water pipeline (GWR Project)
	Coastal Zone
	200 ft fire protection buffer
	Boundary of former Fort Ord
Viewpoints	
	135
	180
	300

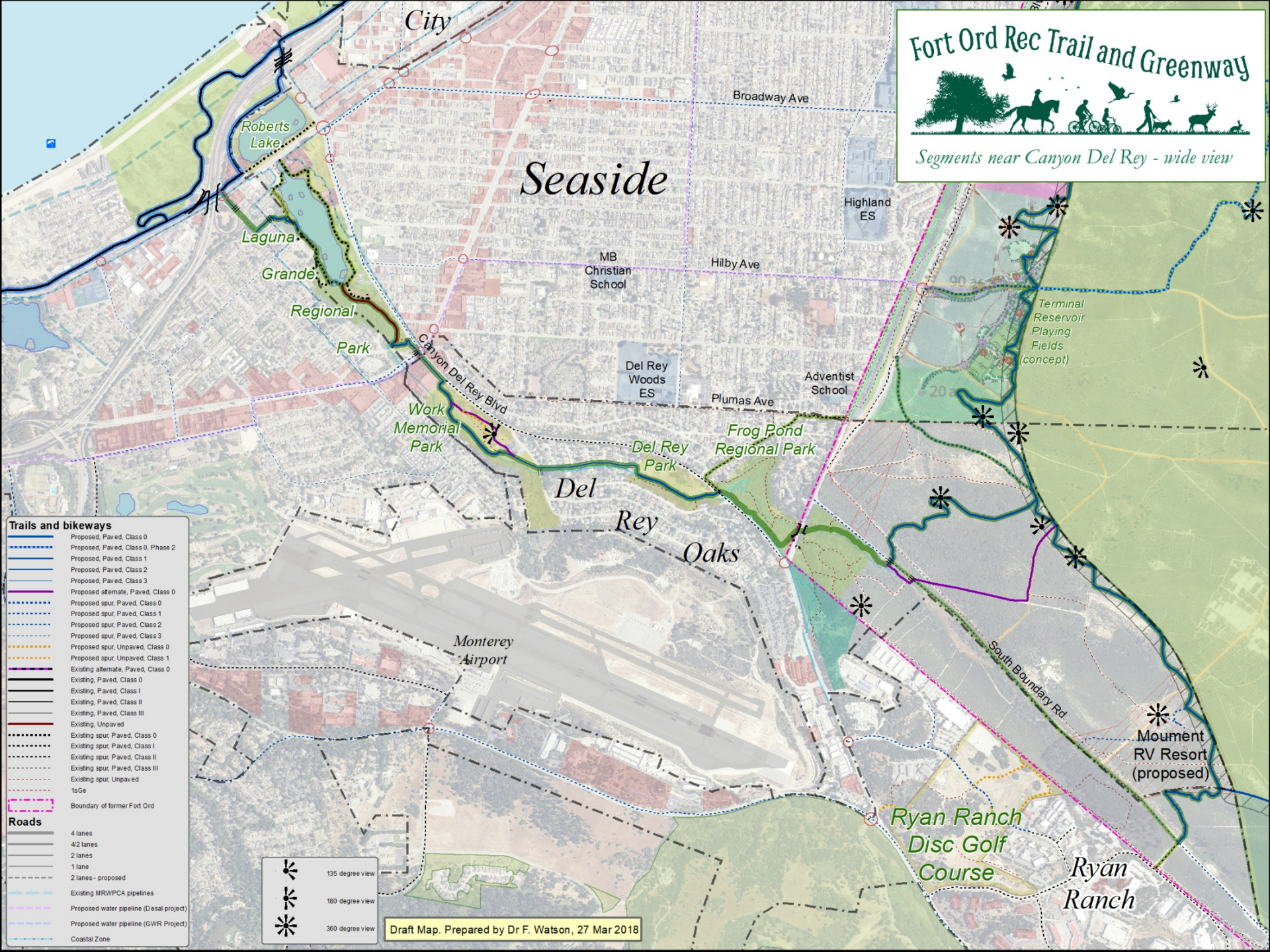


Trails and bikeways	
	Proposed, Paved, Class 0
	Proposed, Paved, Class 0, Phase 2
	Proposed, Paved, Class 1
	Proposed, Paved, Class 2
	Proposed, Paved, Class 3
	Proposed alternate, Paved, Class 0
	Proposed spur, Paved, Class 0
	Proposed spur, Paved, Class 1
	Proposed spur, Paved, Class 2
	Proposed spur, Paved, Class 3
	Existing alternate, Paved, Class 0
	Existing, Paved, Class 0
	Existing, Paved, Class 1
	Existing, Paved, Class 2
	Existing, Paved, Class 3
	Existing road, Unpaved
	Existing sidewalk
	Existing, Unpaved
	Existing spur, Paved, Class 0
	Existing spur, Paved, Class 1
	Existing spur, Paved, Class 2
	Existing spur, Paved, Class 3
	Existing spur, Unpaved
	Existing spur, Unpaved, Class 1
	Existing spur, Unpaved, Faint or Minor
	Proposed spur, Unpaved
	Proposed spur, Unpaved, Class 1

Fort Ord Rec Trail and Greenway



Segments near Canyon Del Rey - wide view



Trails and bikeways

- Proposed, Paved, Class 0
- Proposed, Paved, Class 0, Phase 2
- Proposed, Paved, Class 1
- Proposed, Paved, Class 2
- Proposed, Paved, Class 3
- Proposed alternate, Paved, Class 0
- Proposed spur, Paved, Class 0
- Proposed spur, Paved, Class 1
- Proposed spur, Paved, Class 2
- Proposed spur, Paved, Class 3
- Proposed spur, Unpaved, Class 0
- Proposed spur, Unpaved, Class 1
- Existing alternate, Paved, Class 0
- Existing, Paved, Class 0
- Existing, Paved, Class I
- Existing, Paved, Class II
- Existing, Paved, Class III
- Existing, Unpaved
- Existing spur, Paved, Class 0
- Existing spur, Paved, Class I
- Existing spur, Paved, Class II
- Existing spur, Paved, Class III
- Existing spur, Unpaved
- 1sGe
- Boundary of former Fort Ord

Roads

- 4 lanes
- 4/2 lanes
- 2 lanes
- 1 lane
- 2 lanes - proposed
- Existing MRWPCA pipelines
- Proposed water pipeline (Desal project)
- Proposed water pipeline (GWR Project)
- Coastal Zone

135 degree view

180 degree view

360 degree view

Draft Map. Prepared by Dr F. Watson, 27 Mar 2018