

The Fort Ord Rec Trail and Greenway

(FORTAG)

A photographic tour

F. Watson, S. Waltz, et al.

This version: 29 Apr 2014

“When you carve out the things you can not influence through local policy decisions - such as pay, cost of living, [and] climate - outdoor recreation becomes a pretty big deal. And even when you include those things, 7.6% of [the Arizona Sun Corridor’s¹] total **ability to attract highly skilled workers ... comes from the ability of these people to go out and play on trails.**”

“The narrative that we really should be pursuing, particularly here on Fort Ord, ... is that **access to trails and natural areas produces economic prosperity and resilience.** It does so not only with tourism and recreation but also **by contributing to the local conditions that attract and retain highly skilled workers.**”

“Outdoor enthusiasts ... mountain bikers, road bikers, hikers, bird watchers ... most of the time, we’re going **close to home** because we just got off work and its four o’clock and we want to get a quick trail run in, or something like that.”

Luther Propst

Final speaker, Fort Ord Colloquium, December 12-13, 2013

¹ Population: 5.3 million














































From Jerry Smith Trailhead to the ocean

Through Whispering Oaks,
past Marina Equestrian Center,
through Dunes at Monterey Bay,
intersecting with the Coastal Rec Trail



This Access Corridor
in honor of
Jerry Smith
Former
Seaside Mayor
and County Supervisor





This Access Corridor
in honor of
**Sgt. Allan
MacDonald**
U.S. Horse Cavalry









CSUMB
Chapman
Science
Academic
Center



CSUMB
Building 1



CSUMB
dorms
North
Quad



Future
dorms
Promontory
at CSUMB








BIKE PATH

NO
MOTOR
VEHICLES
OR
MOTORIZED
BICYCLES







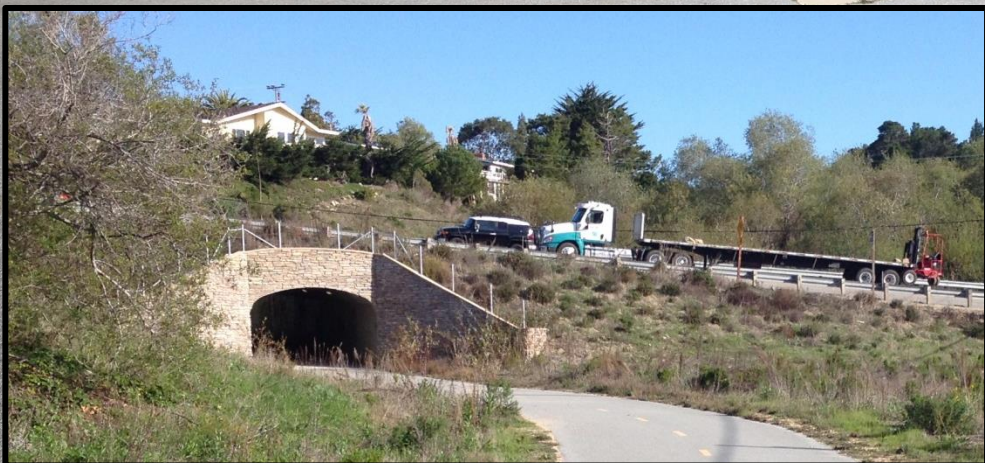


















**FORT ORD DUNES
STATE PARK**







BEACH
ACCESS



WISCONSIN DUNE







BEACH
ACCESS



WARNING

RECURRING
RIP
CURRENT
NO
LIFEGUARD
ON DUTY

PELIGRO

MAREA
PELIGROSAS O
APARECEN
DEREPEENTE
CHAPOTEAR O
NADAR ES MUY
PELIGROSO
EMERGENCIAS CALL 911





From Jerry Smith Trailhead to the Salinas River and back to Marina

Through Fort Ord habitat parcels,
past East Garrison Community,
along the Salinas River Bluffs,
down to the Salinas River,
behind the Marina Airport,
past Armstrong Ranch,
back to the Coastal Rec Trail at Lapis (north of Marina)



This Access Corridor
in honor of
Jerry Smith
Former
Seaside Mayor
and County Supervisor



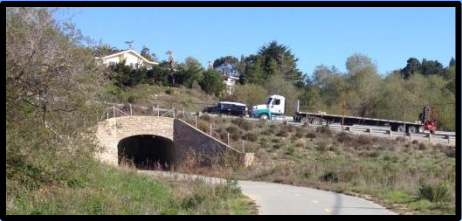
**NO
TRESPASSING**
PC 602 and all
California Vehicle
Codes Enforced
**ALL TRAILS
and AREAS
CLOSED**













Underpass

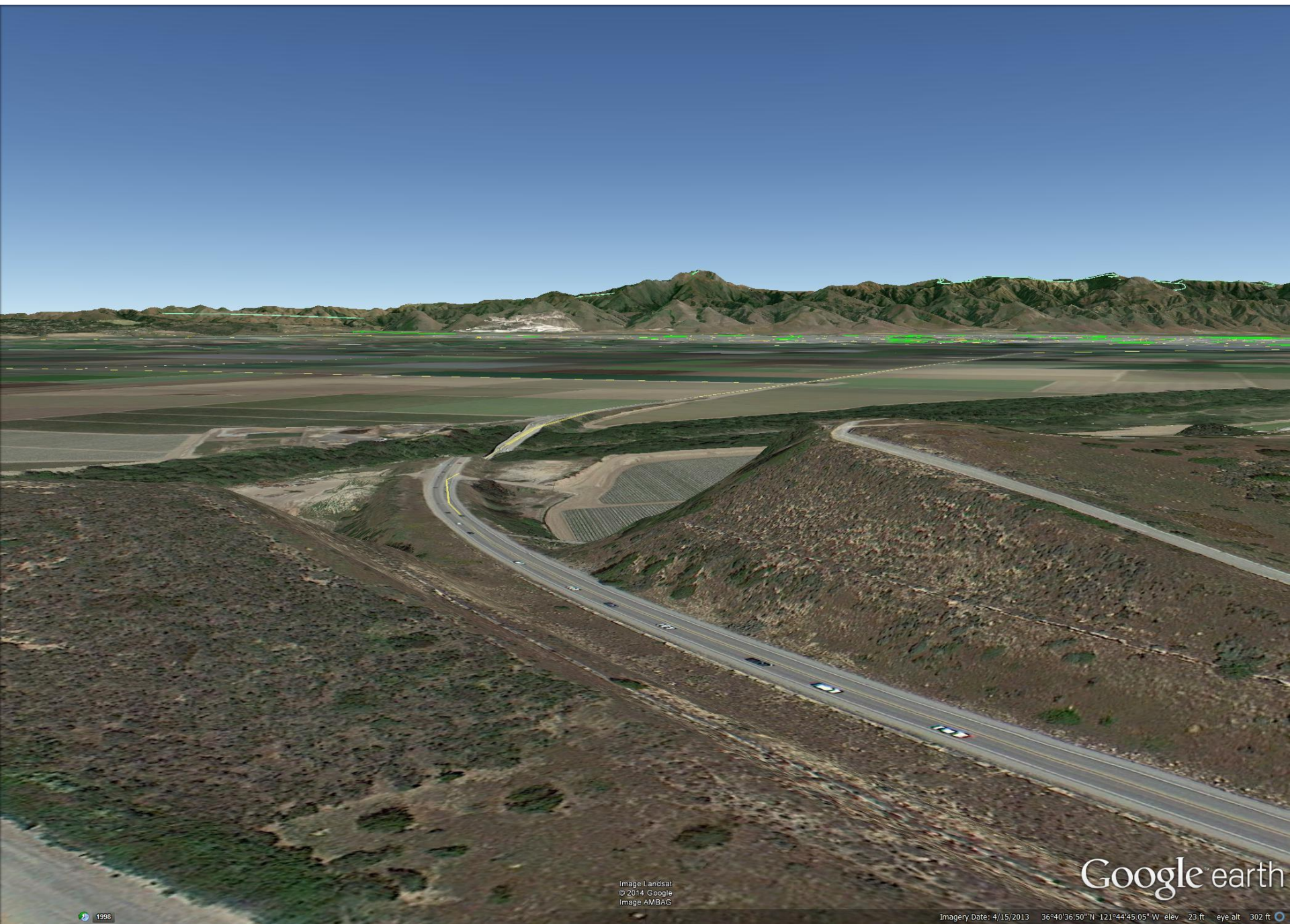








Blanco Canyon Bike Bridge – proposed location



Blanco Canyon Bike Bridge – proposed bridge – high version

