



The Fort Ord Rec Trail and Greenway (FORTAG)

www.fortag.org

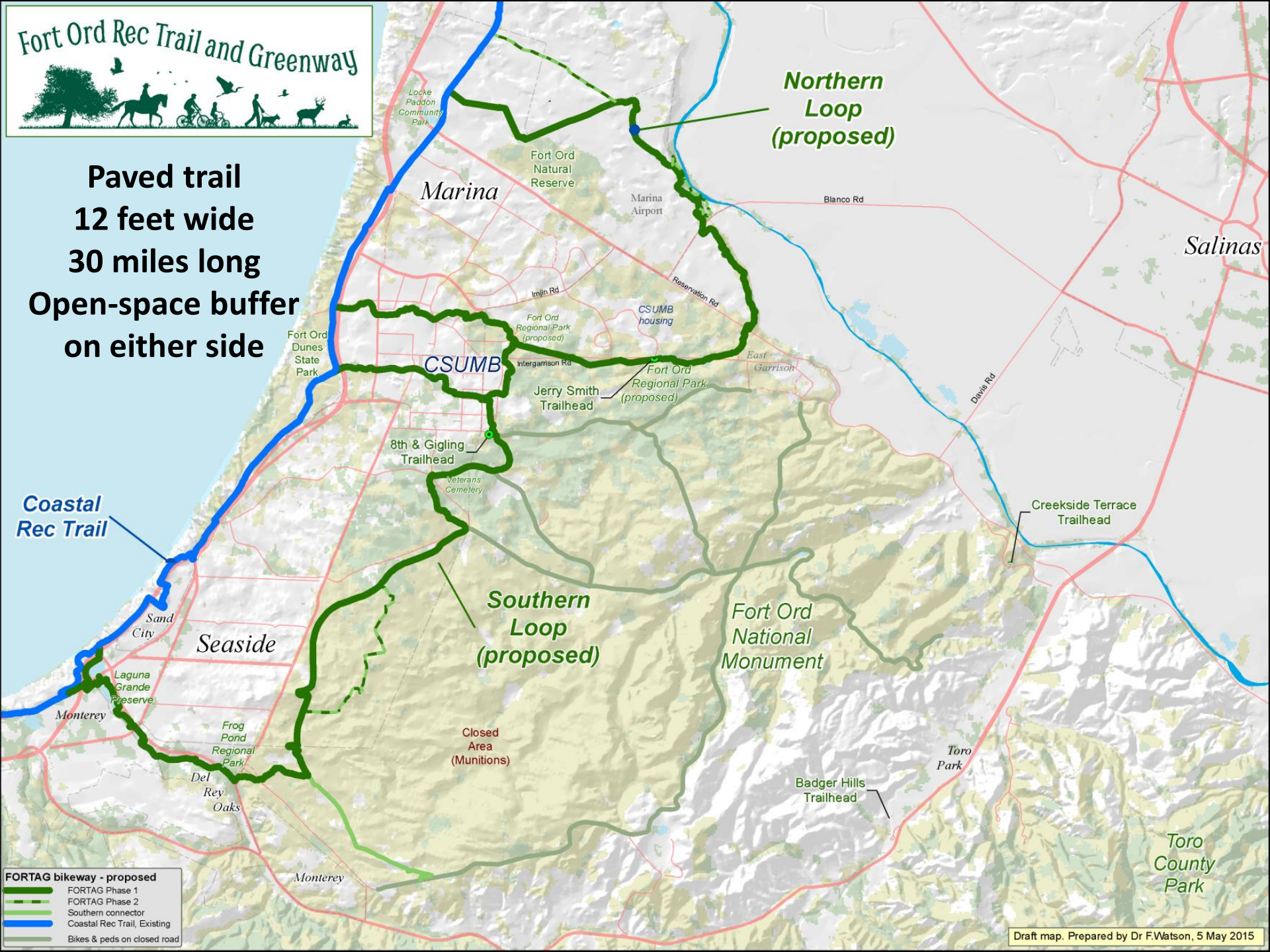
Presentation to CSUMB Master Plan Transportation Committee

Fred Watson, Scott Waltz

19 Oct 2015



**Paved trail
12 feet wide
30 miles long
Open-space buffer
on either side**



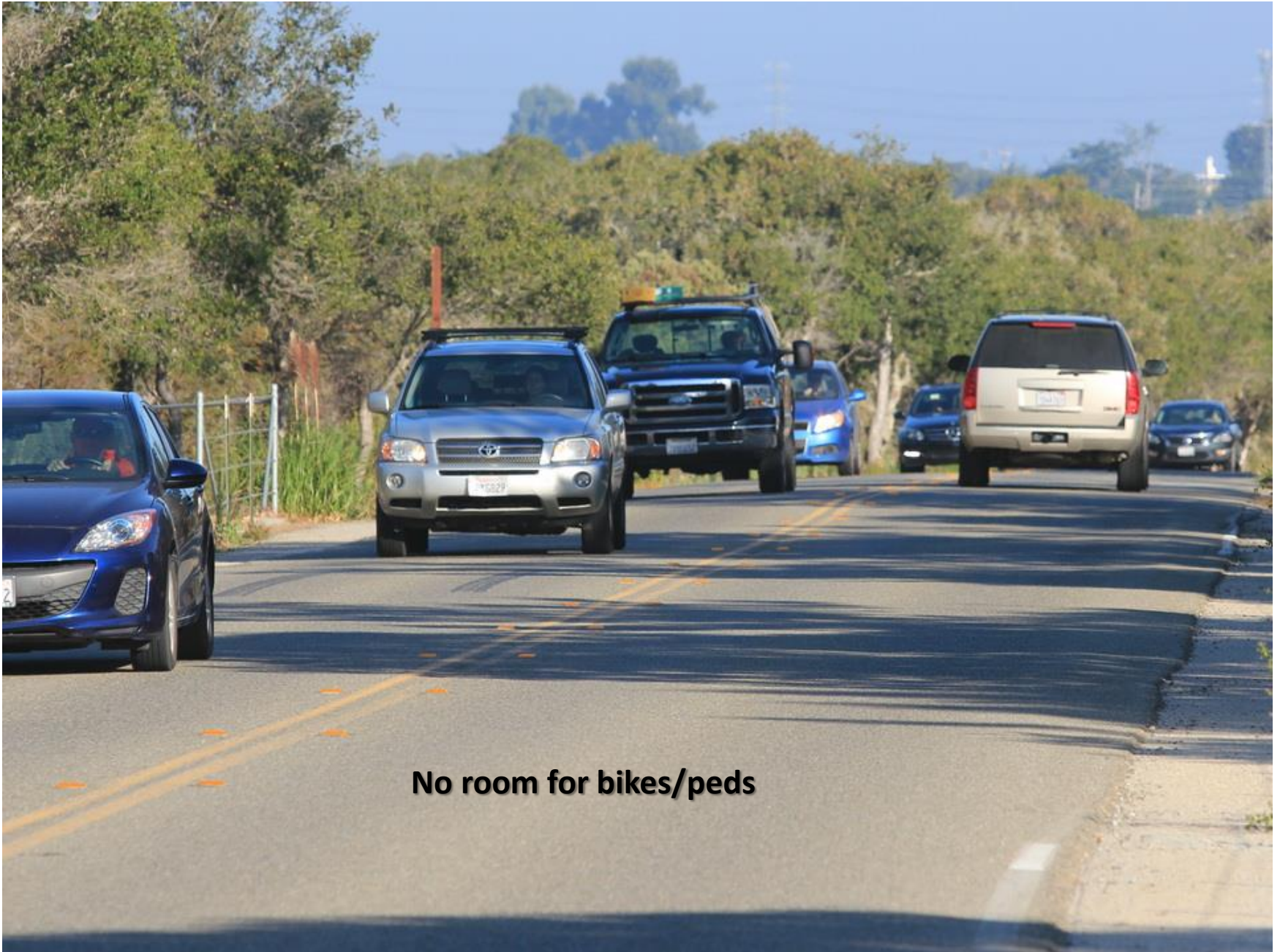
FORTAG bikeway - proposed

- FORTAG Phase 1
- FORTAG Phase 2
- Southern connector
- Coastal Rec Trail, Existing
- Bikes & peds on closed road

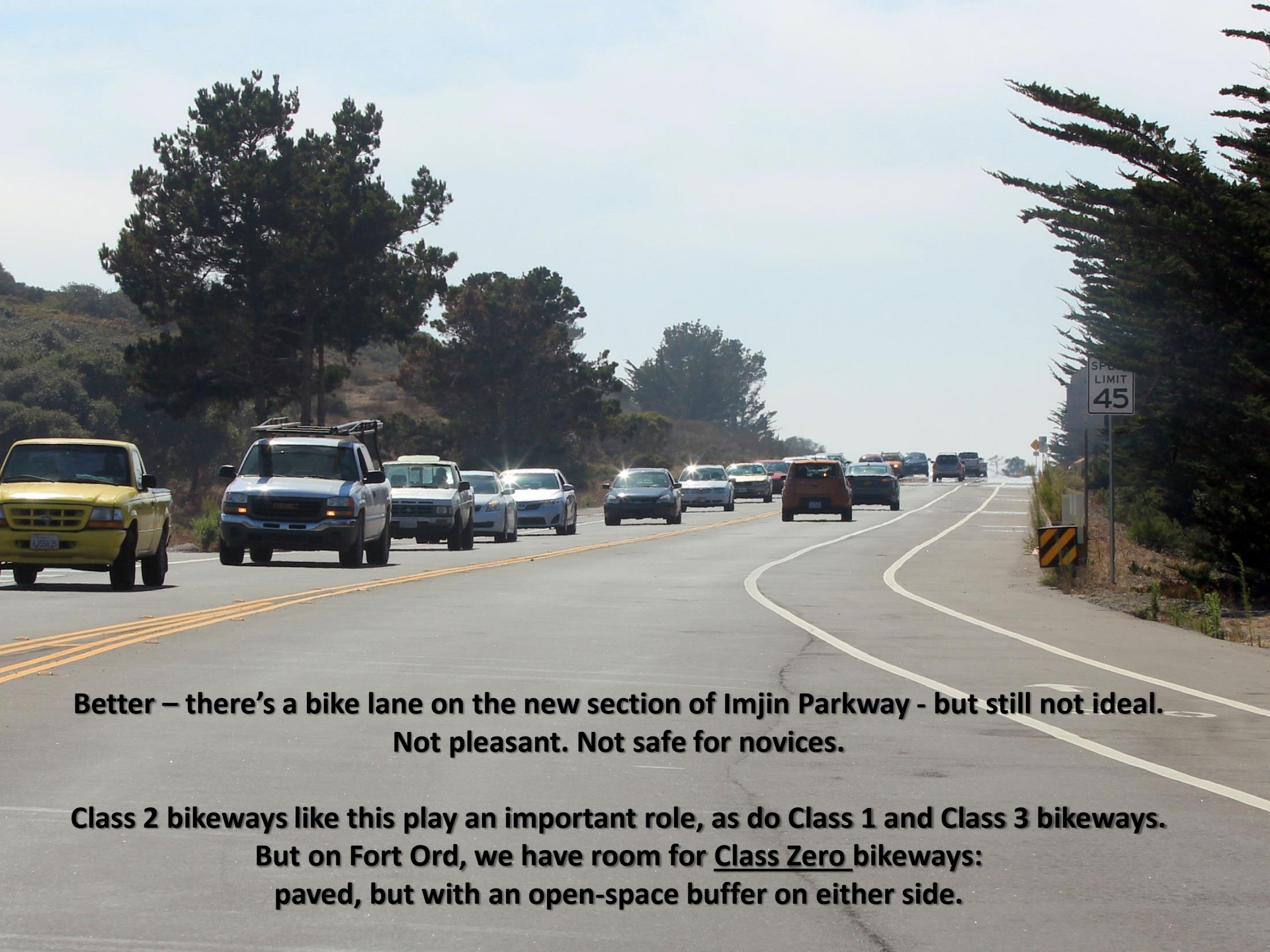
Fort Ord is currently experiencing a wave of development.
Long-blighted areas are finally being replaced with homes, retail, etc.



We've made progress on upgrading transportation on Fort Ord.
But some things are still problematic.



No room for bikes/peds



**Better – there's a bike lane on the new section of Imjin Parkway - but still not ideal.
Not pleasant. Not safe for novices.**

**Class 2 bikeways like this play an important role, as do Class 1 and Class 3 bikeways.
But on Fort Ord, we have room for Class Zero bikeways:
paved, but with an open-space buffer on either side.**



**Great to be bike-commuting. But is this a “great” experience for the cyclists?
Why do the bikes need to be so close to so many cars?**

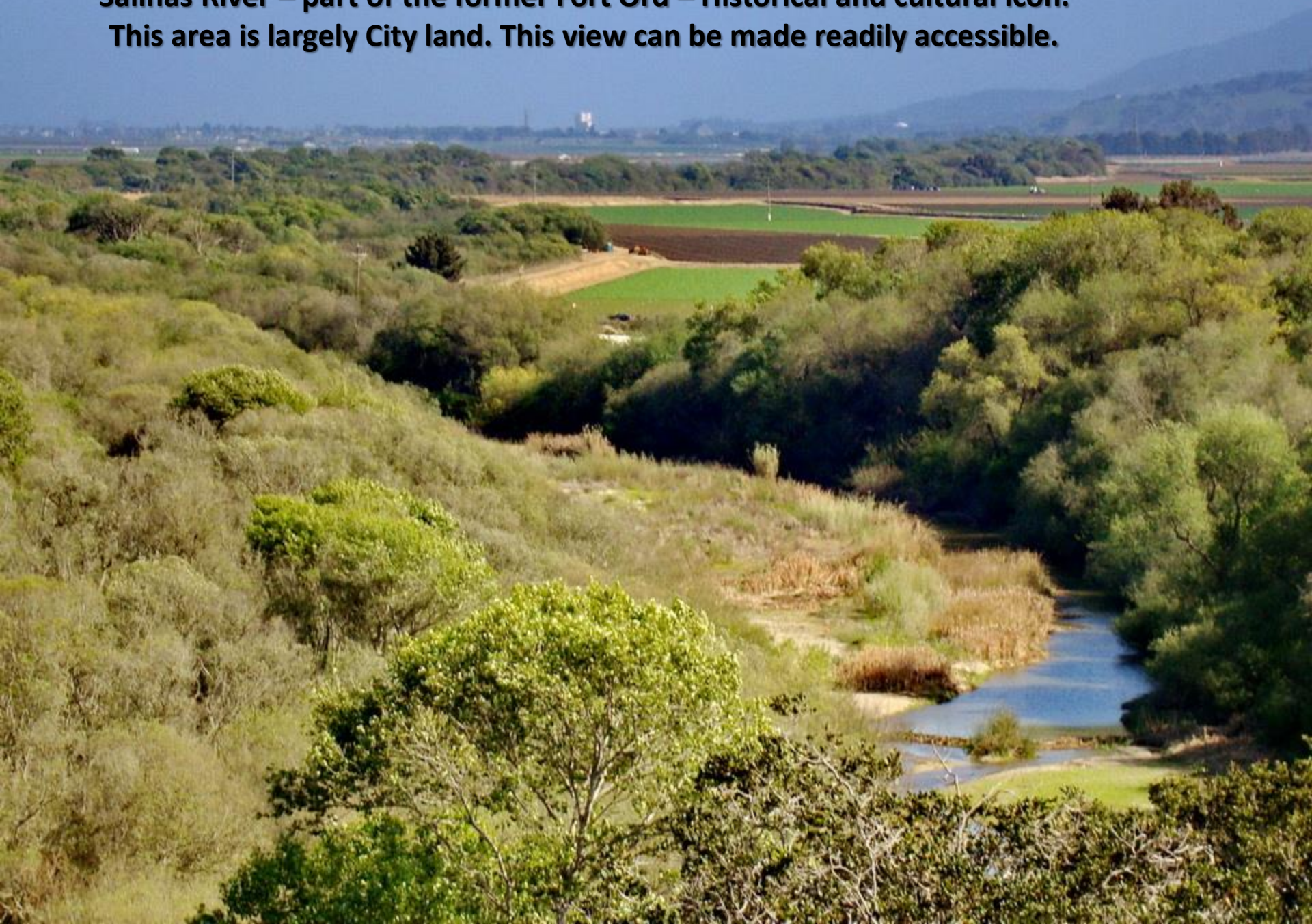


Ditto. This time a walk-commuter. Not the most pleasant walk to work – despite the abundance of open-space on either side of the road.

Fort Ord National Monument – our backyard



**Salinas River – part of the former Fort Ord – Historical and cultural icon.
This area is largely City land. This view can be made readily accessible.**



Fort Ord has many hidden gems within easy reach of residential areas



**The student experience should maximize opportunity
to reach and use open space**



**The existing Coastal Rec Trail* is a wonderful example
of what we can add to the palette of transportation and recreation options
in the more inland parts of Fort Ord**



Commuting on a trail with room creates social opportunities



**A scenic run with friends after work.
We want to make this possible on the inland side of
Seaside, Marina, Del Rey Oaks, and Monterey
– not just on the coast**



Paved trails separated from cars are much more accessible than “Class 1” trails, which can be very close to traffic, and often have many places where the trail crosses roads.



This is an open county road.

We need to create safer places to accomplish the same goals,
and we have the room to do it.



Recreational opportunity
for disabled persons



Trails and cafes go well together



THE
WHARF
MARKETPLACE
THE BOUNTY OF THE COUNTY

- Please park bikes in the provided racks
- Leashed pets are welcome in the outdoor patio area
- Tables are for customers
- This is a smoke free area

Thank you!

Coastal Rec Trail – a wide range of users, every day and weekend, at all times of day



The many forms of commuting along trails in greenways
(which don't always have to be colored "green")





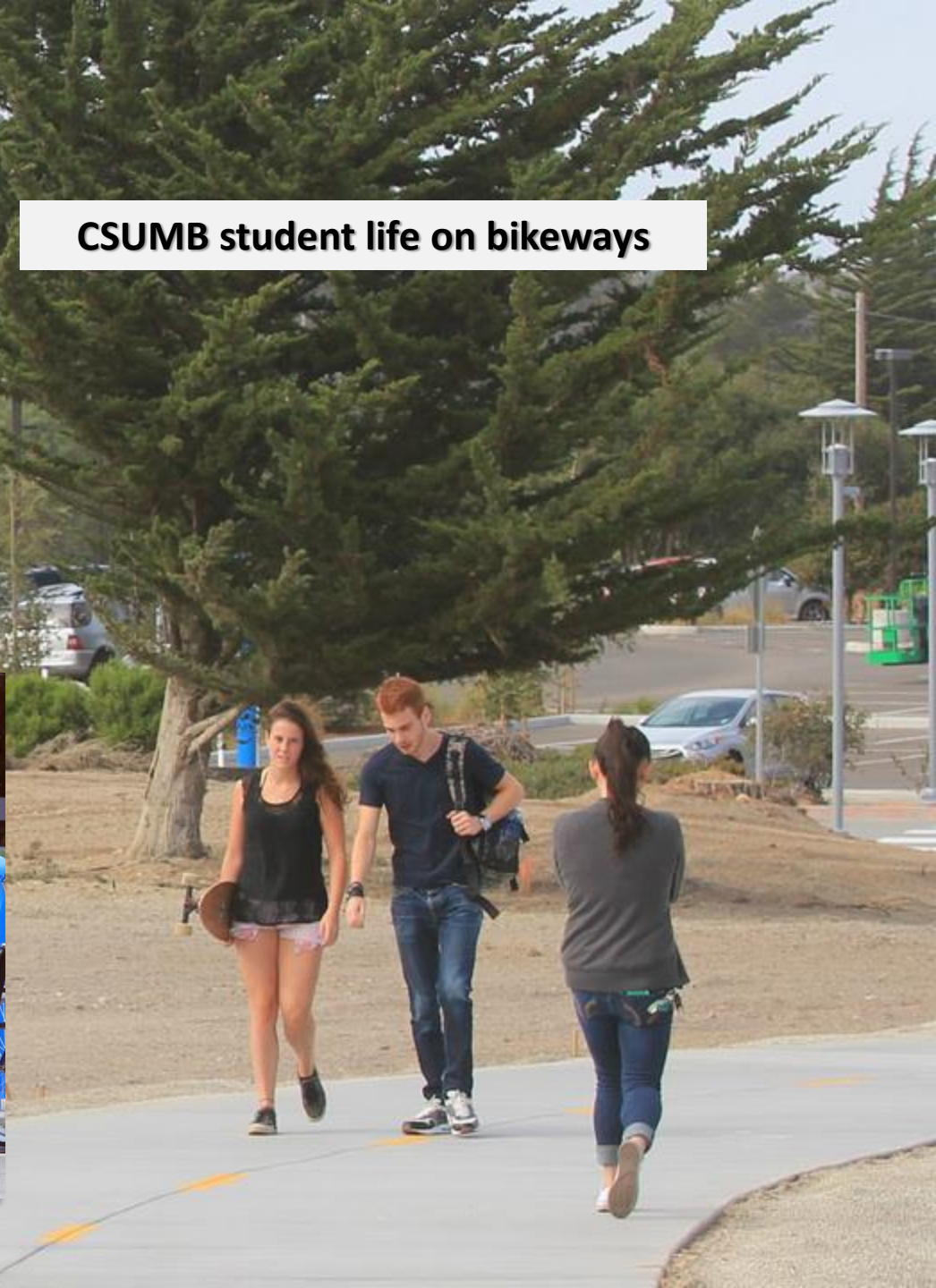
**CSUMB students use bikes
to get around campus,**

**and to explore the
Fort Ord National Monument**

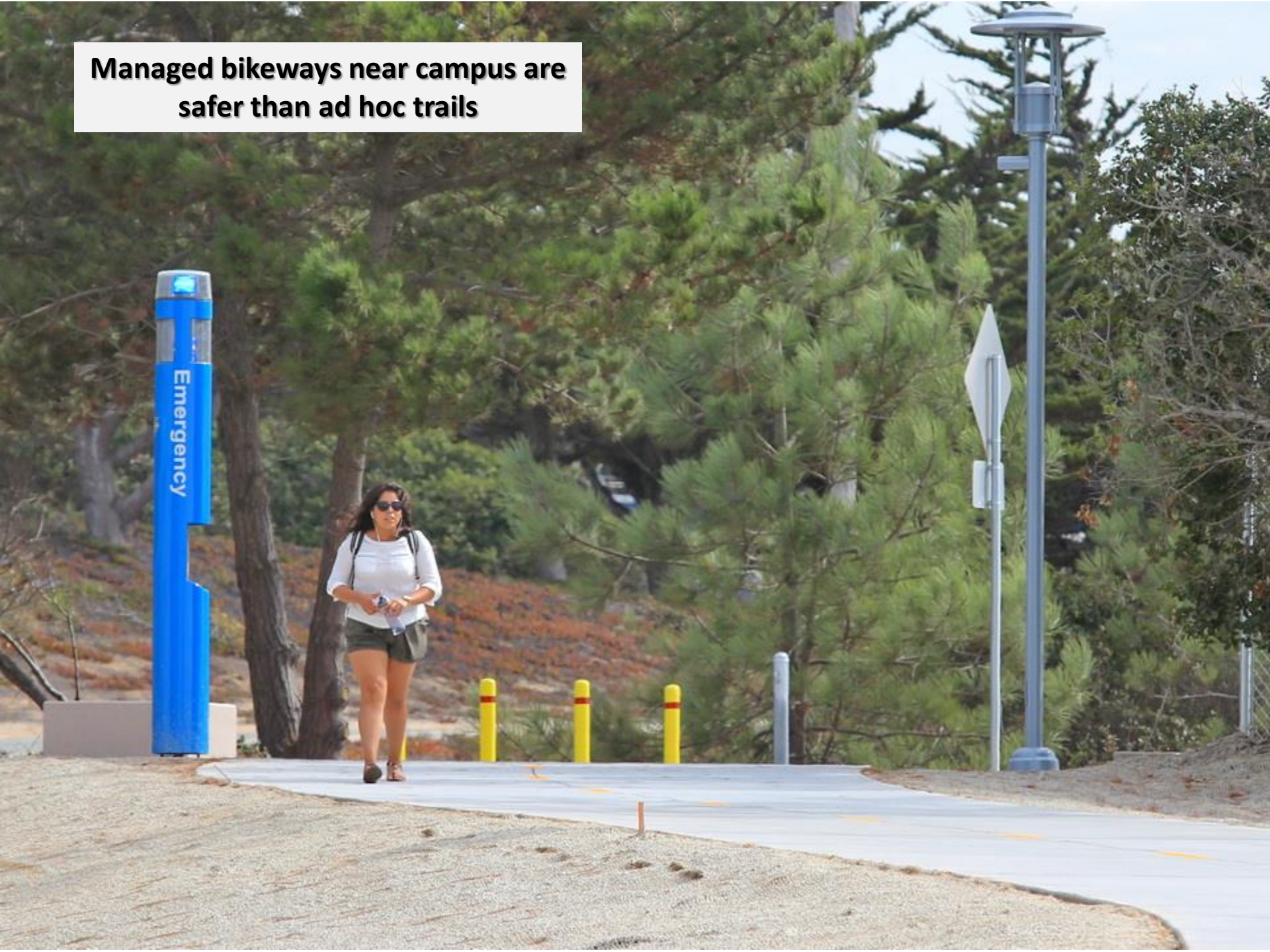
CSUMB student life on bikeways



CSUMB student life on bikeways



**Managed bikeways near campus are
safer than ad hoc trails**



“Happy Trails”

**Right next door to campus,
but not yet facilitated by trails from campus**



**On-campus trails and
habitat learning engagement**

Just next door at the Chartwell School



FORTAG Vision

The Fort Ord Rec Trail and Greenway (FORTAG) is proposed as a continuous 12-ft wide paved bikeway with an open-space buffer on both sides incorporating habitat, parks, playing fields, developed outdoor recreation sites, associated amenities, unpaved trails, and agriculture. The open-space buffer should extend at least 150-ft on each side of the trail for the majority of its length. The northern loop of FORTAG encircles Marina, following a 13 mile route that includes 3 miles of the existing “Coastal Rec Trail”. The southern loop of FORTAG encircles Seaside and bisects Del Rey Oaks, following a 15 mile route that includes 4 miles of the existing coastal trail system. The Trail includes spurs connecting with existing bike/pedestrian infrastructure and plans. Several sections of the paved trail will be accompanied by nearby unpaved trails running loosely parallel to the main paved trail. Many of these unpaved trails already exist.

FORTAG’s intended purposes include: connecting people to open-space from their homes, workplaces, and hospitality bases; connecting together core habitat areas; facilitating social interaction between Fort Ord, Monterey Peninsula, and the Salinas Valley; and acting as an artery from which to launch numerous other recreational activities. The paved trail is intended to be a pleasant and visually obvious route that invites safe use by families with young children on bikes, and that can be jointly used by walkers, joggers, children in strollers, wheelchairs (in key segments), commuter cyclists, and recreational cyclists (including those with narrow tires). Substantial portions of the greenway are intended to support unpaved paths used by hikers, mountain bikers, equestrians, and naturalists. FORTAG will involve approximately three underpasses and one overpass for pedestrians and bikes.

Values

- FORTAG should:
 - Connect people to open space
 - Be a pleasant experience
 - Be useable by anyone
 - Have room for everyone
 - Be complementary to the built environment
 - Have loops, of different sizes
 - Be 100% connected all the way around each loop
 - Have no 'red flags' from land owners and/or jurisdictions
 - Function as a habitat corridor for dispersal of native plants and movement of wildlife
(with the exception of certain constrained segments where this is impractical)



Northern Loop (proposed)

The Big Picture

Salinas

Coastal Rec Trail

Marina

CSUMB

Southern Loop (proposed)

Seaside

Fort Ord National Monument

Creekside Terrace Trailhead

8th & Gigling Trailhead

Jerry Smith Trailhead

Fort Ord Regional Park (proposed)

Fort Ord Regional Park (proposed)

Reservation Rd

Imjin Rd

Marina Airport

Fort Ord Natural Reserve

Locke Paddon Community Park

Fort Ord Dunes State Park

Laguna Grande Preserve

Frog Pond Regional Park

Del Rey Oaks

Closed Area (Munitions)

Badger Hills Trailhead

Toro Park

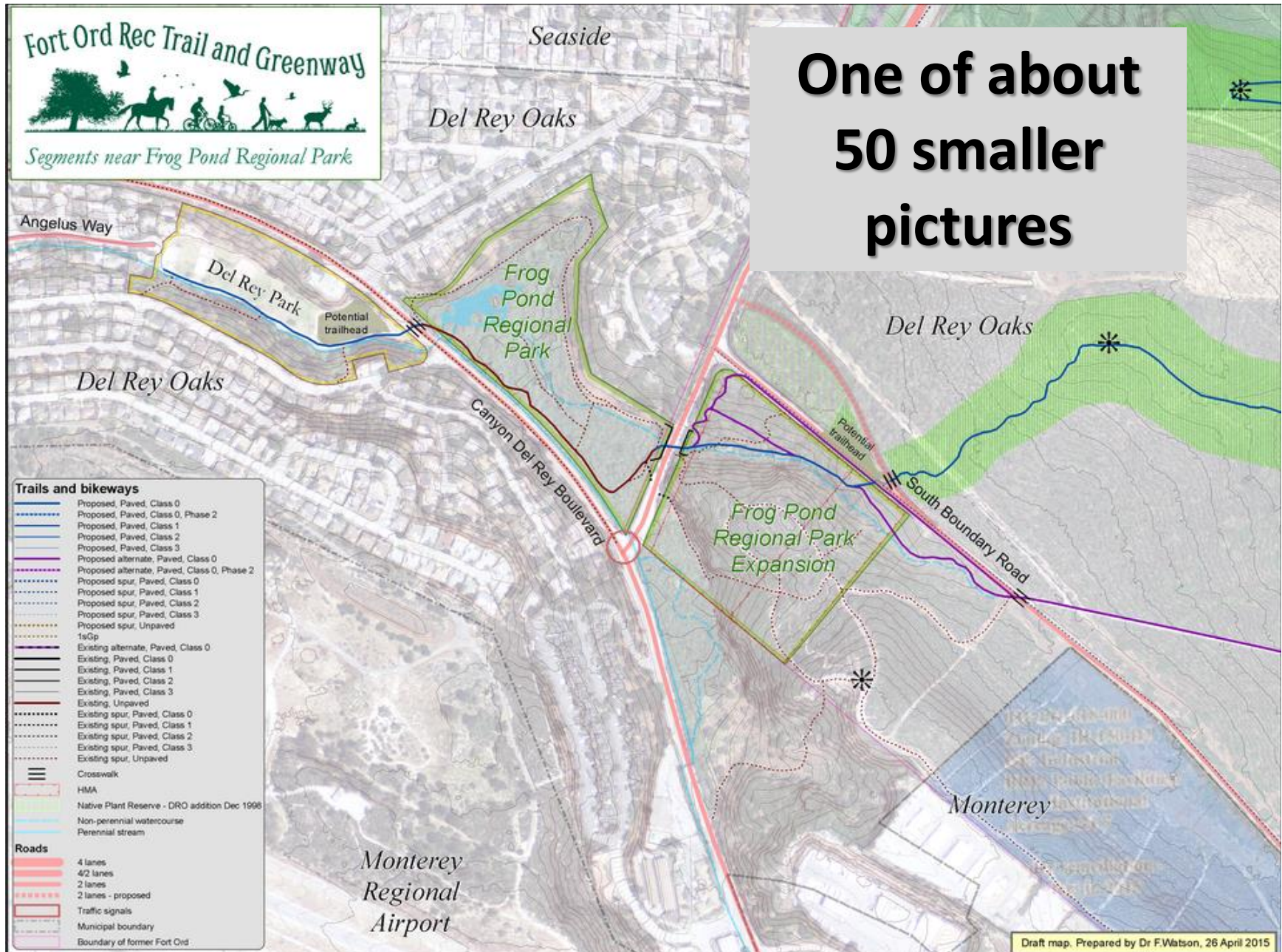
Toro County Park

FORTAG bikeway - proposed

- FORTAG Phase 1
- FORTAG Phase 2
- Southern connector
- Coastal Rec Trail, Existing
- Bikes & peds on closed road

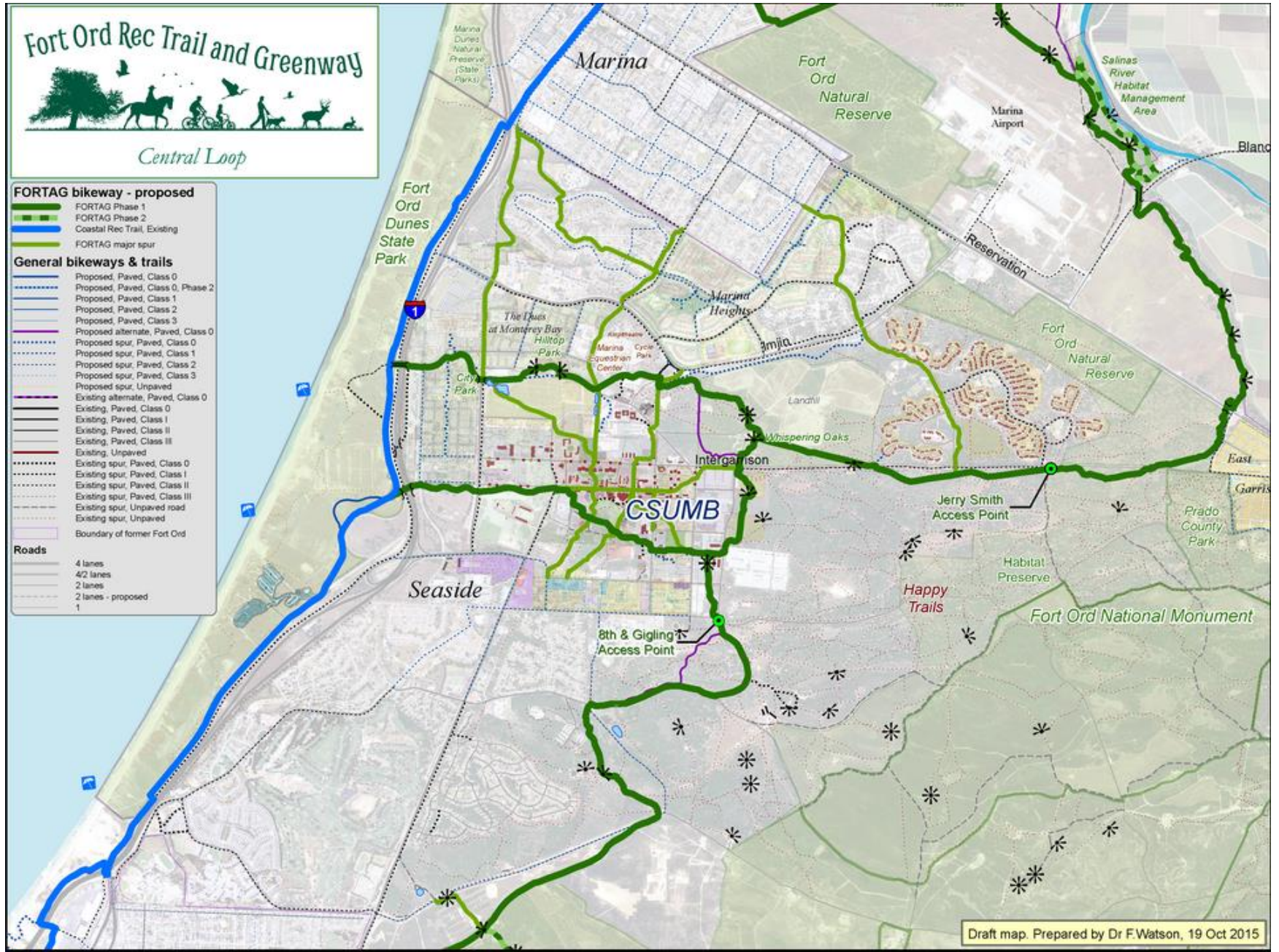
FORTAG – Detail near Frog Pond Regional Park

Map illustrates detailed approach to planning near crucial nodes



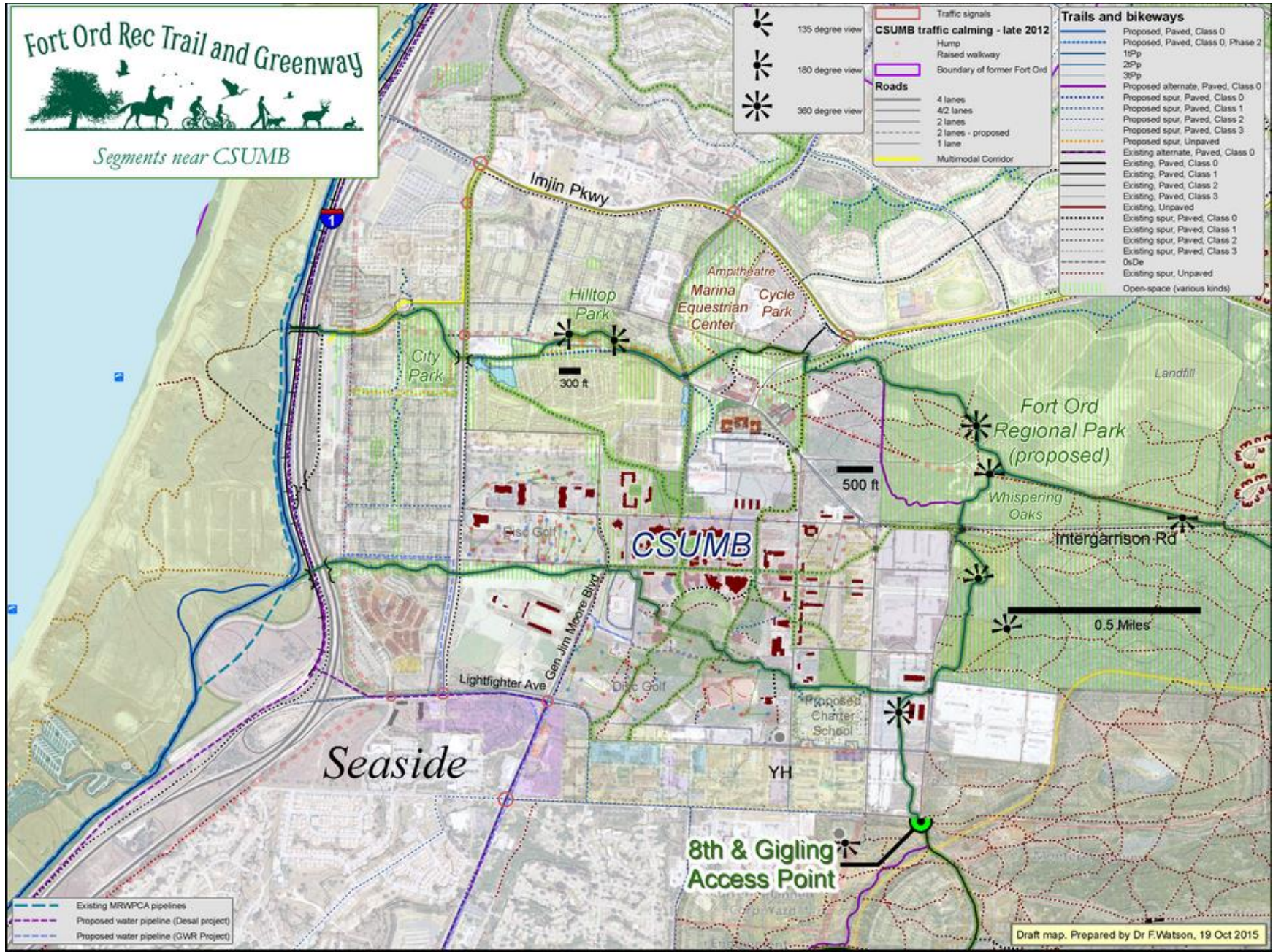
FORTAG – Major trail connections around CSUMB

Map illustrates how FORTAG is intended to be easily reachable from all communities



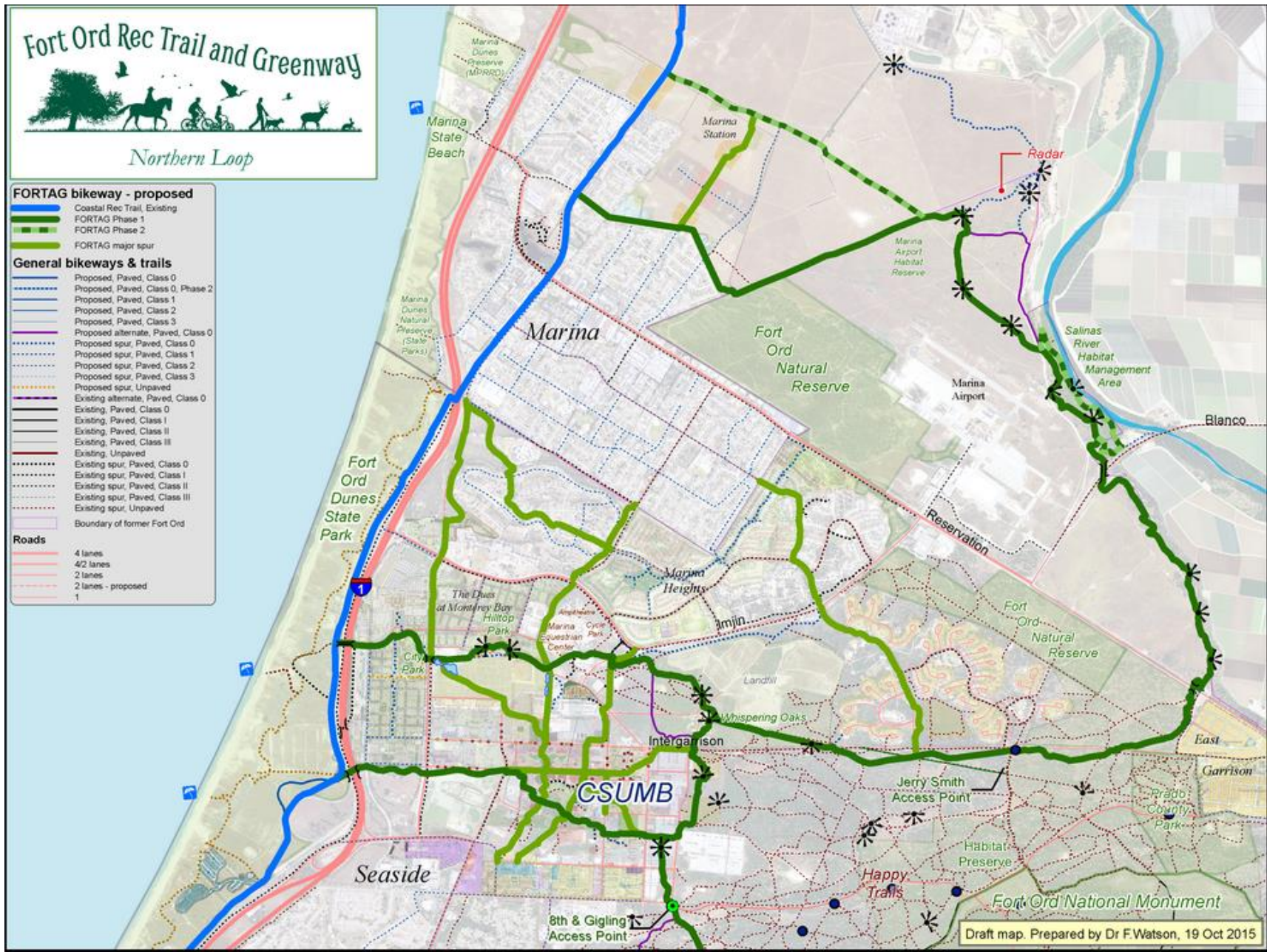
FORTAG – Central loop around CSUMB

Map illustrates how FORTAG is intended to be easily reachable from all communities



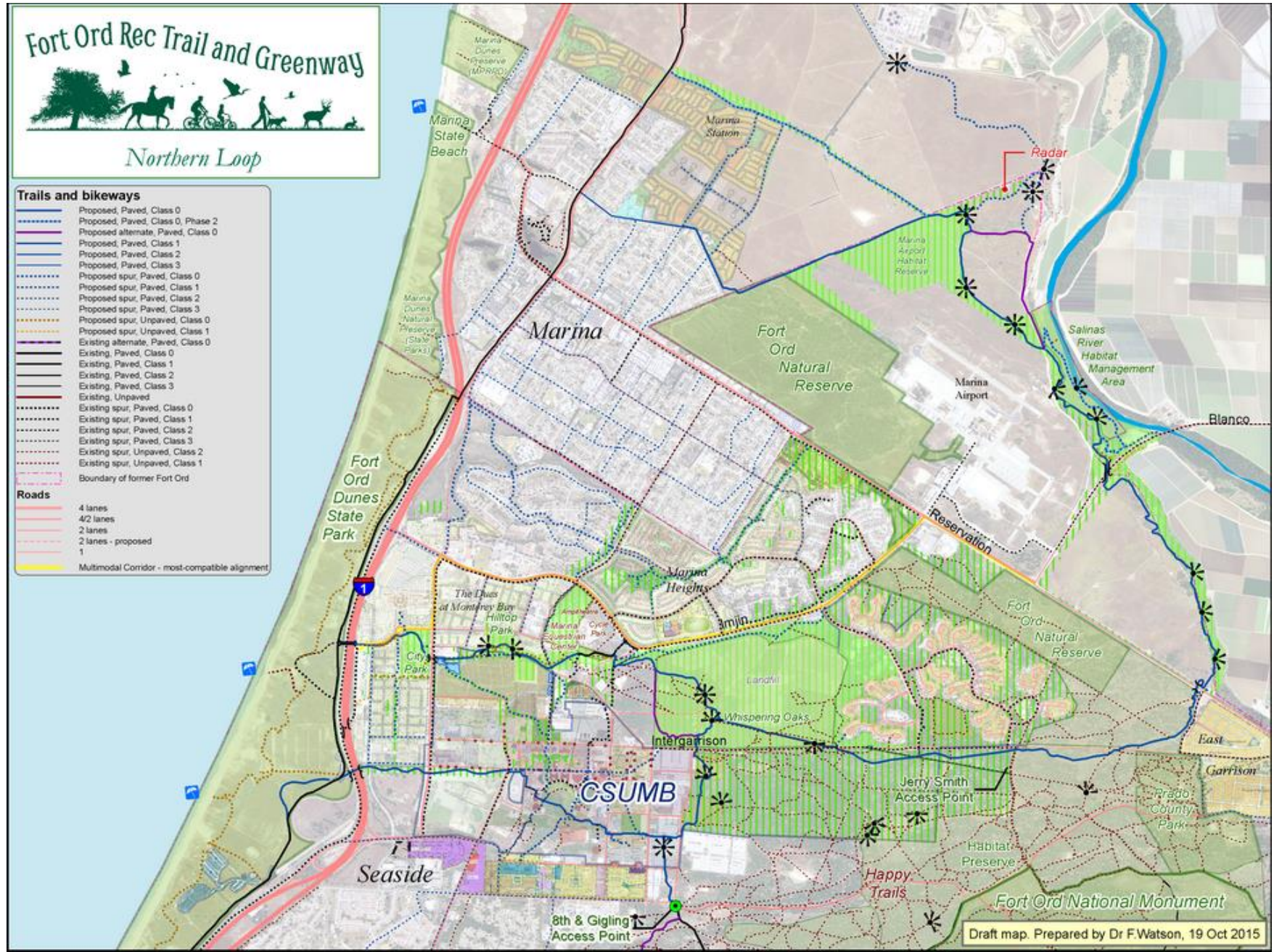
FORTAG – Major trail connections around Marina

Map illustrates how FORTAG is intended to be easily reachable from all communities



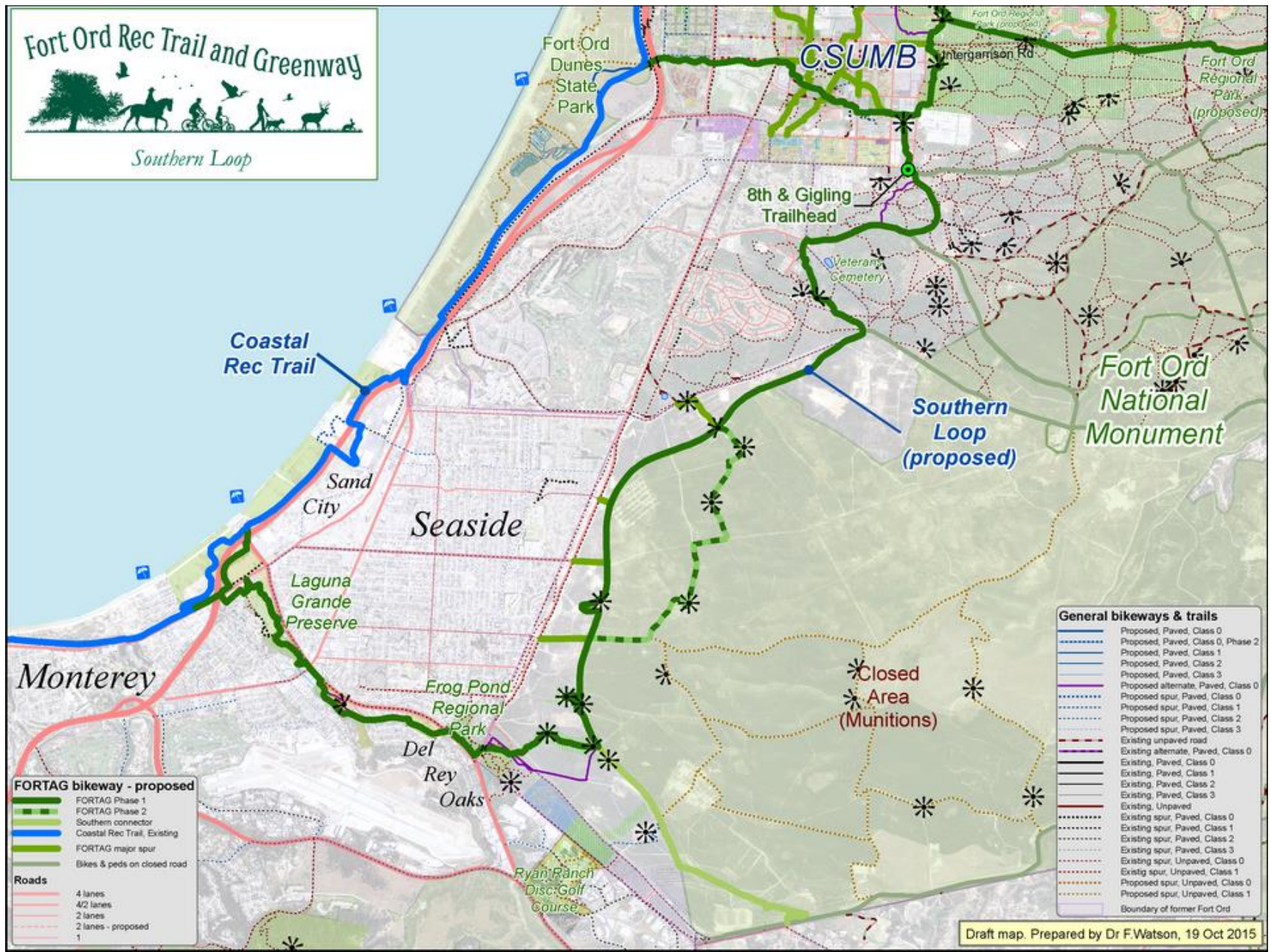
FORTAG – Northern loop around Marina

Map provides an example of the level of detail of planning to date, and the multitude of stakeholders



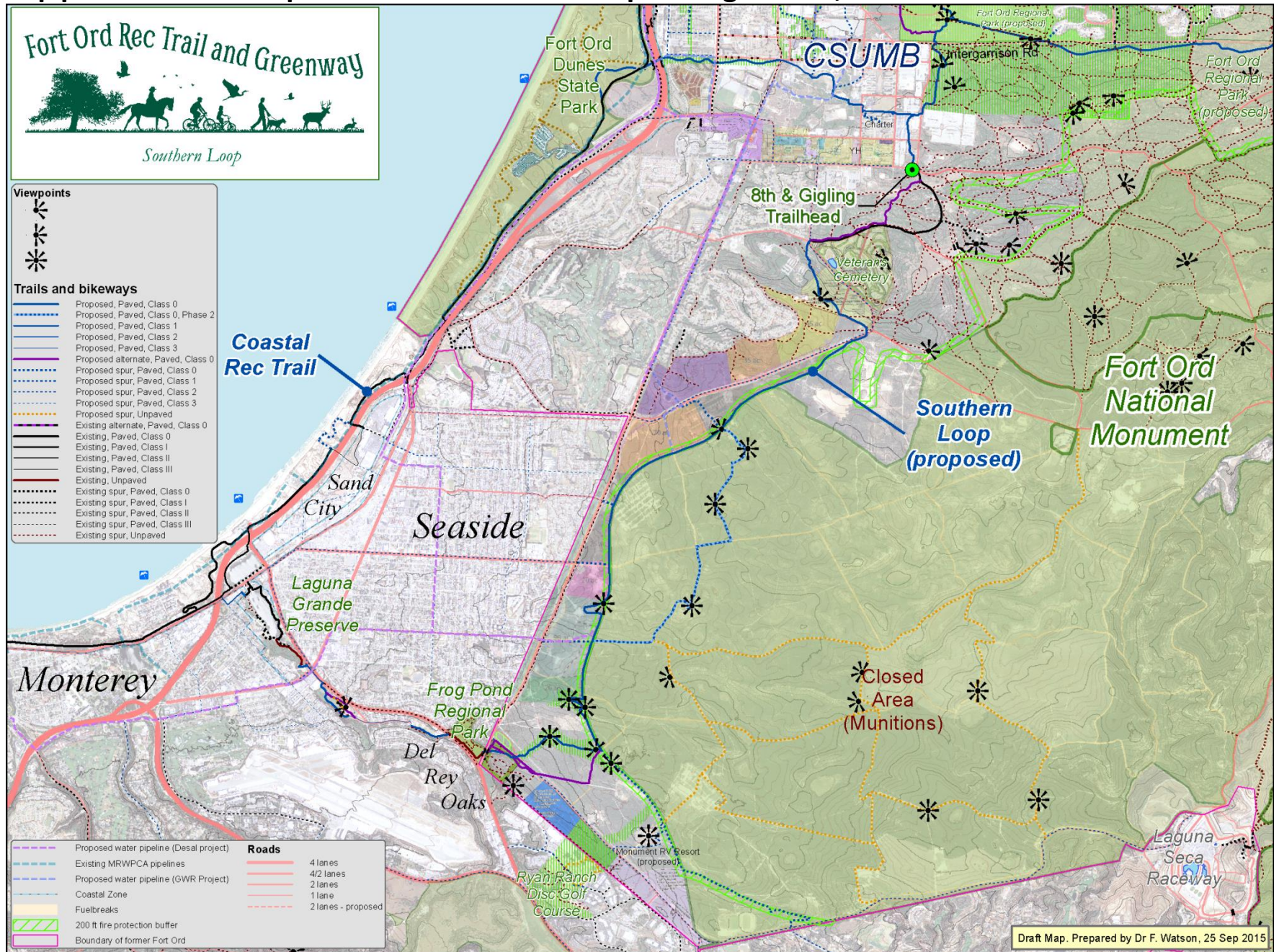
FORTAG – Major trail connections around Seaside

Map illustrates how FORTAG is intended to be easily reachable from all communities



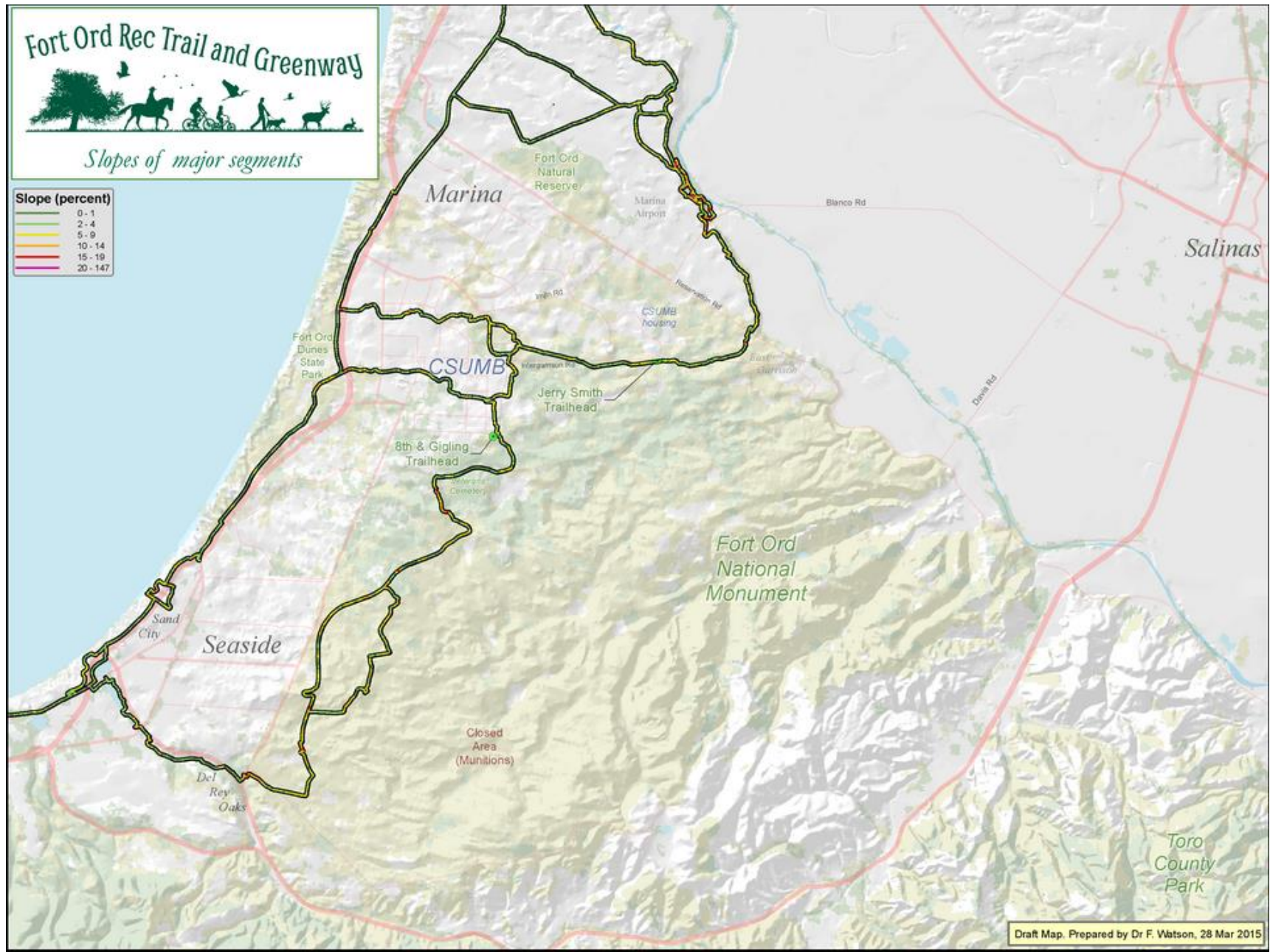
FORTAG – Southern loop around Seaside & Del Rey Oaks

Map provides an example of the level of detail of planning to date, and the multitude of stakeholders



FORTAG – Slopes / gradients of major segments

Map illustrates approach to facilitating accessibility



3D rendering of some FORTAG sections

Illustrates how we're looking at FORTAG from every conceivable angle

(Also illustrates where we're discussing the future main connection between FORTAG and East Garrison)





By the way, if you happen to be shown in one of these photos and either: (1) want a copy of the photo, or (2) want the photo to be removed from our outreach materials, then just let us know. fred@fortag.org

Fort Ord Rec Trail and Greenway



www.fortag.org



Questions?